

# Where are They Now?

For over three decades, the ACPA Excellence in Concrete Pavement Awards have shined a spotlight on the people and projects setting the standard for quality and craftsmanship in the concrete pavement field. Before we celebrate this year's winners (coming in the next edition!), we're taking a step back in time to revisit some of the award's earliest champions—and to see how their work continues to deliver long-life performance today.

## TH 169 SHAKOPEE BYPASS, SCOTT COUNTY, MINNESOTA

In 1997, the TH 169 Shakopee Bypass project earned a Silver Award in the *Divided Highways - Rural category*—that is 28 years ago! This groundbreaking project was one of the first MnDOT pavements built with a 0.4 w/c ratio, paving the way for today's PEM (Performance Engineered Mixtures) innovations. Nearly three decades later, this stretch of highway still tells a success story—showing remarkable durability with only minimal repairs and light grinding needed.



Photo credit: Matt Zeller, Concrete Paving Association of Minnesota



Photo credit: Matt Zeller, Concrete Paving Association of Minnesota



Photo credit: Matt Zeller, Concrete Paving Association of Minnesota

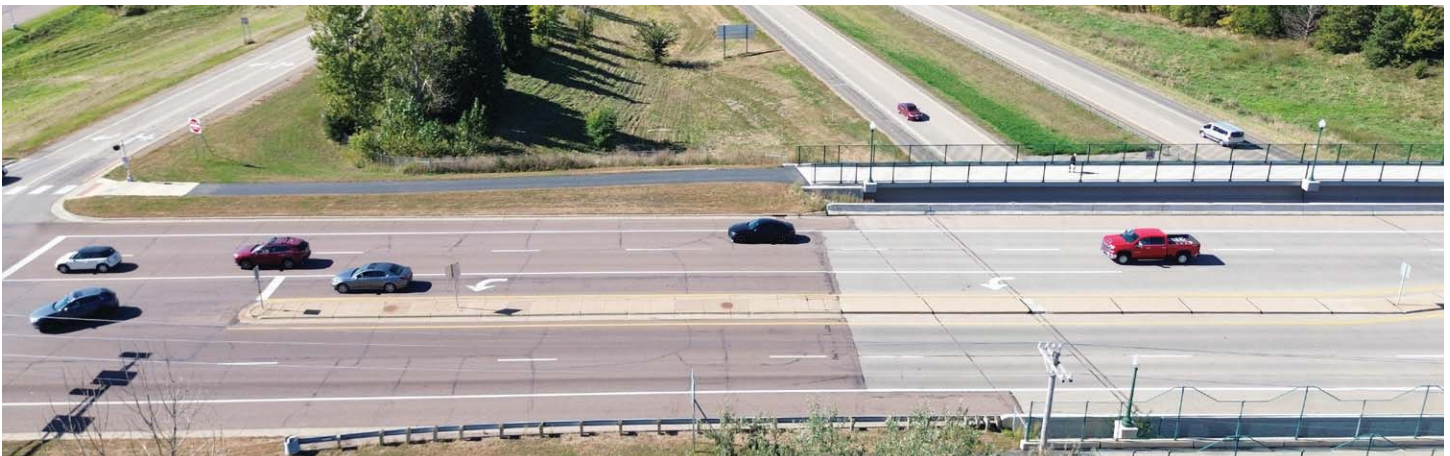


Photo credit: Matt Zeller, Concrete Paving Association of Minnesota

## COUNTY HIGHWAY 9, OLMSTED COUNTY, MINNESOTA

The County Highway 9 project in Olmsted County earned a Silver Award in the *County Roads* category back in 1995. After more than two decades of service, it underwent minor rehabilitation in 2018, the same year a nearby roundabout was added. Now entering its 31st year, this pavement continues to perform well, outlasting its expected design life and demonstrating the lasting value of quality concrete pavement construction.



Photo credit: Olmsted County Public Works



Photo credit: Olmsted County Public Works



Photo credit: Olmsted County Public Works

## ROGERS LANE PHASE IV, LAWTON AND COMANCHE COUNTY, OKLAHOMA

Since earning a Silver Award in the *Municipal Streets and Urban Arterials* category in 1997, the Rogers Lane Phase IV project in Lawton, Okla., has quietly proven the staying power of quality concrete pavement. Nearly three decades later, it has only needed minimal maintenance with no plans for additional rehabilitation in the immediate future. It's a perfect example of how durable, well-built concrete continues to deliver value and reliability for the communities it supports.



Photo Credit: Brent Burwell, OK/AR Chapter, ACPA

## US HWY. 69 FROM SH 113 NORTH 10 MI., PITTSBURG COUNTY, OKLAHOMA

In 1991, the US Highway 69 project (SH 113 North, 10 miles) took home a Gold Award in the State & Primary Roads category. More than three decades later, this CRCP project has proven its durability, requiring almost no maintenance. With no major work planned, it is expected to continue performing for another 20 years, surpassing its original design expectations, a true testament to the long-life potential of quality concrete pavement.



Photo Credit: Brent Burwell, OK/AR Chapter, ACPA

## K-15 SOUTHEAST BOULEVARD/LEWIS DRIVE, DERBY THROUGH MULVANE, SEDGWICK COUNTY, KANSAS

The K-15 Southeast Boulevard project in Sedgwick County, Kan., took home the Gold Award in the Municipal Streets and Urban Arterials category. In fact, just two years prior, in 1995, the K-15 Highway/Southeast Boulevard also won Gold in the State Roads category. This multiple award-winning state highway continues to perform well despite entering into its 29th year. Contractor Wildcat Construction currently notes the projects show very little stress and have maintained great smoothness.



Photo Credit: Alan Farrington, P.E., Wildcat Construction Co., Inc.



Photo Credit: Alan Farrington, P.E., Wildcat Construction Co., Inc.



Photo Credit: Alan Farrington, P.E., Wildcat Construction Co., Inc.

## STATE HIGHWAY K-96, MT. HOPE TO HAVEN, KANSAS

State Highway K-96 is also a repeat award winner in the state of Kan., having won Gold Awards in both 1996 and 1997 in the *State Roads* category for separate projects. Despite receiving this recognition over 28 years ago, these State Highway K-96 projects have performed well only receiving minor patching. Current reports indicate the concrete pavement still rides smoothly. 🗡️



Photo Credit: Alan Farrington, P.E., Wildcat Construction Co., Inc.



Photo Credit: Alan Farrington, P.E., Wildcat Construction Co., Inc.



Photo Credit: Alan Farrington, P.E., Wildcat Construction Co., Inc.



Photo Credit: Alan Farrington, P.E., Wildcat Construction Co., Inc.